

## CD300LF Polyclonal Antibody

Catalog No. E-AB-30819

**Note:** Centrifuge before opening to ensure complete recovery of vial contents.

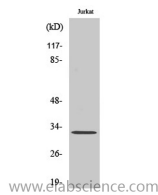
### Description

<b>Reactivity</b>	Human
<b>Immunogen</b>	Synthesized peptide derived from the Internal region of human CD300f
<b>Host</b>	Rabbit
<b>Isotype</b>	IgG
<b>Purification</b>	Affinity purification
<b>Buffer</b>	PBS with 0.02% sodium azide, 0.5% protective protein and 50% glycerol pH 7.4.

### Applications Recommended Dilution

<b>WB</b>	1:500-1:2000
<b>ELISA</b>	1:40000

### Data



Western Blot analysis of Jurkat cells with CD300LF  
Polyclonal Antibody  
**Observed Mw:30kDa**  
**Calculated Mw:32kDa**

### Preparation & Storage

**Storage** Store at -20°C. Avoid freeze / thaw cycles.

### Background

This gene encodes a member of the CD300 protein family. Members of this family are cell surface glycoproteins with a single IgV-like extracellular domain, and are involved in the regulation of immune response. The encoded protein is an inhibitory receptor. Alternative splicing results in multiple transcript variants. CD300LF (CD300 Molecule Like Family Member F) is a Protein Coding gene. Among its related pathways are Immunoregulatory interactions between a Lymphoid and a non-Lymphoid cell and Innate Immune System. An important paralog of this gene is CD300LD.

### For Research Use Only