

ZG16 Polyclonal Antibody

Catalog No. E-AB-53054

Note: Centrifuge before opening to ensure complete recovery of vial contents.

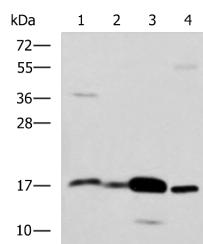
Description

Reactivity	Human, Mouse
Immunogen	Fusion protein of human ZG16
Host	Rabbit
Isotype	IgG
Purification	Antigen affinity purification
Conjugation	Unconjugated
Buffer	PBS with 0.05% NaN ₃ and 40% Glycerol, pH7.4

Applications Recommended Dilution

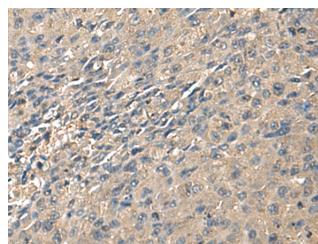
WB	1:1000-1:5000
IHC	1:100-1:300

Data

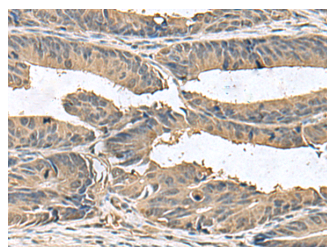


Western blot analysis of Mouse Pancreas tissue
Mouse small intestines tissue Mouse large intestine
tissue Human sigmoid tissue lysates using ZG16
Polyclonal Antibody at dilution of 1:1350

Observed Mw: Refer to figures
Calculated Mw: 18 kDa



Immunohistochemistry of paraffin-embedded
Human liver cancer tissue using ZG16 Polyclonal
Antibody at dilution of 1:95 (×200)



Immunohistochemistry of paraffin-embedded
Human colorectal cancer tissue using ZG16
Polyclonal Antibody at dilution of 1:95 (×200)

Preparation & Storage

For Research Use Only

Storage Store at -20°C. Avoid freeze / thaw cycles.

Background

May play a role in protein trafficking. May act as a linker molecule between the submembranous matrix on the luminal side of zymogen granule membrane (ZGM) and aggregated secretory proteins during granule formation in the TGN.