

CD31 Polyclonal Antibody

Catalog No. E-AB-30820

Note: Centrifuge before opening to ensure complete recovery of vial contents.

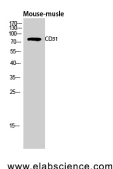
Description

Reactivity	Human, Mouse
Immunogen	Synthesized peptide derived from human CD31 around the non-phosphorylation site of Tyr713.
Host	Rabbit
Isotype	IgG
Purification	Affinity purification
Conjugation	Unconjugated
Buffer	PBS with 0.02% sodium azide, 0.5% BSA and 50% glycerol, pH7.4

Applications Recommended Dilution

WB 1:500-1:2000,
IHC 1:100-1:300, IF
1:200-1:1000, ELISA
1:20000

Data



Western Blot analysis of Rat muscle using CD31
Polyclonal Antibody at dilution of 1:1000.

Observed Mw:82kDa
Calculated Mw:83kDa

Preparation & Storage

Storage Store at -20°C. Avoid freeze / thaw cycles.

Background

The protein encoded by this gene is found on the surface of platelets, monocytes, neutrophils, and some types of T-cells, and makes up a large portion of endothelial cell intercellular junctions. The encoded protein is a member of the immunoglobulin superfamily and is likely involved in leukocyte migration, angiogenesis, and integrin activation.

For Research Use Only