

## SLC30A6 Polyclonal Antibody

Catalog No. E-AB-53093

**Note:** Centrifuge before opening to ensure complete recovery of vial contents.

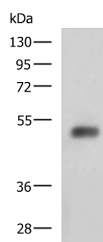
### Description

<b>Reactivity</b>	Human, Mouse
<b>Immunogen</b>	Fusion protein of human SLC30A6
<b>Host</b>	Rabbit
<b>Isotype</b>	IgG
<b>Purification</b>	Antigen affinity purification
<b>Conjugation</b>	Unconjugated
<b>Buffer</b>	PBS with 0.05% NaN <sub>3</sub> and 40% Glycerol, pH7.4

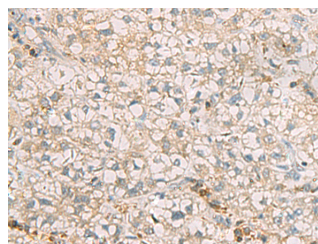
### Applications Recommended Dilution

<b>WB</b>	1:1000-1:5000
<b>IHC</b>	1:50-1:200

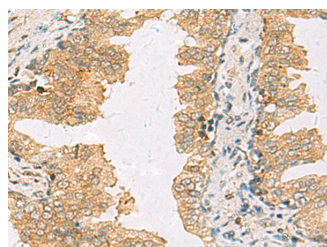
### Data



Western blot analysis of Human bladder transitional cell carcinoma grade 2-3 tissue lysate using SLC30A6 Polyclonal Antibody at dilution of 1:2000  
**Observed Mw: Refer to figures**  
**Calculated Mw: 51 kDa**



Immunohistochemistry of paraffin-embedded Human liver cancer tissue using SLC30A6 Polyclonal Antibody at dilution of 1:70 (×200)



Immunohistochemistry of paraffin-embedded Human prostate cancer tissue using SLC30A6 Polyclonal Antibody at dilution of 1:70 (×200)

### Preparation & Storage

#### For Research Use Only

**Storage** Store at -20°C. Avoid freeze / thaw cycles.

## Background

Zinc functions as a cofactor for numerous enzymes, nuclear factors, and hormones and as an intra- and intercellular signal ion. Members of the zinc transporter (ZNT)/SLC30 subfamily of the cation diffusion facilitator family, such as SLC30A6, permit cellular efflux of zinc.