

UCHL1 Polyclonal Antibody

Catalog Number:E-AB-53097



Note: Centrifuge before opening to ensure complete recovery of vial contents.

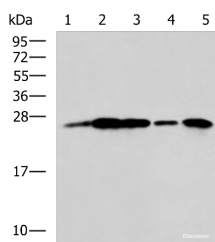
Description

Reactivity	Human, Mouse, Rat
Immunogen	Fusion protein of human UCHL1
Host	Rabbit
Isotype	IgG
Purification	Antigen affinity purification
Conjugation	Unconjugated
Formulation	PBS with 0.05% NaN3 and 40% Glycerol,pH7.4

Applications Recommended Dilution

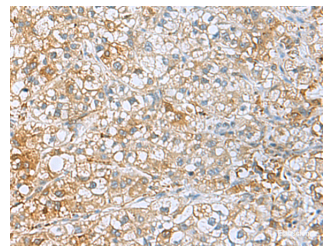
WB	1:1000-1:5000
IHC	1:50-1:200
ELISA	1:5000-1:10000

Data



Western blot analysis of A549 cell Rat brain tissue Mouse brain tissue A172 cell Human cerebrum tissue lysates using UCHL1 Polyclonal Antibody at dilution of 1:800

Observed Mw:Refer to figures
Calculated Mw:25 kDa



Immunohistochemistry of paraffin-embedded Human liver cancer tissue using UCHL1 Polyclonal Antibody at dilution of 1:50(×200)

Preparation & Storage

Storage Store at -20°C. Avoid freeze / thaw cycles.

Background

UCHL1(Ubiquitin carboxyl-terminal hydrolase isozyme L1) is a member of a gene family whose products hydrolyze small C-terminal adducts of ubiquitin to generate the ubiquitin monomer. Expression of UCHL1 is highly specific to neurons and to cells of the diffuse neuroendocrine system and their tumors. It is present in all neurons. This protein is present in brain at concentrations at least 50 times greater than in other organs and is a major protein component of neuronal cytoplasm . And UCHL1 is a Parkinson's disease susceptibility gene .

For Research Use Only

A Reliable Research Partner in Life Science and Medicine

Toll-free: 1-888-852-8623

Web: www.elabscience.com

Tel: 1-832-243-6086

Email: techsupport@elabscience.com

Fax: 1-832-243-6017