

CD40 Polyclonal Antibody

Catalog No. E-AB-30828

Note: Centrifuge before opening to ensure complete recovery of vial contents.

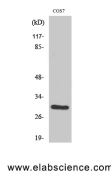
Description

Reactivity	Human,Mouse,Monkey
Immunogen	Synthesized peptide derived from the C-terminal region of human CD40
Host	Rabbit
Isotype	IgG
Purification	Affinity purification
Conjugation	Unconjugated
Buffer	PBS with 0.02% sodium azide, 0.5% protective protein and 50% glycerol, pH7.4

Applications Recommended Dilution

WB	1:500-1:2000
IHC	1:100-1:300
ELISA	1:10000

Data



Western Blot analysis of COS7 cells with CD40
Polyclonal Antibody.
Observed Mw:30kDa
Calculated Mw:31kDa

Preparation & Storage

Storage Store at -20°C. Avoid freeze / thaw cycles.

Background

Receptor for TNFSF5/CD40LG.

For Research Use Only