

CD50 Polyclonal Antibody

Catalog No. E-AB-30832

Note: Centrifuge before opening to ensure complete recovery of vial contents.

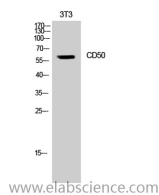
Description

Reactivity	Human
Immunogen	Synthesized peptide derived from human CD50 around the non-phosphorylation site of S518.
Host	Rabbit
Isotype	IgG
Purification	Affinity purification
Buffer	PBS with 0.02% sodium azide, 0.5% protective protein and 50% glycerol pH 7.4.

Applications Recommended Dilution

WB	1:500-1:2000
IF	1:200-1:1000
ELISA	1:5000

Data



Western Blot analysis of NIH-3T3 cells with CD50
Polyclonal Antibody.
Observed Mw:59kDa
Calculated Mw:59kDa

Preparation & Storage

Storage Store at -20°C. Avoid freeze / thaw cycles.

Background

ICAM proteins are ligands for the leukocyte adhesion protein LFA-1 (integrin alpha-L/beta-2). ICAM3 is also a ligand for integrin alpha-D/beta-2.

For Research Use Only