

ITIH2 Polyclonal Antibody

Catalog No. E-AB-53189

Note: Centrifuge before opening to ensure complete recovery of vial contents.

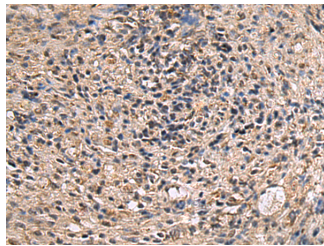
Description

Reactivity	Human, Mouse
Immunogen	Fusion protein of human ITIH2
Host	Rabbit
Isotype	IgG
Purification	Antigen affinity purification
Conjugation	Unconjugated
Buffer	PBS with 0.05% NaN ₃ and 40% Glycerol,pH7.4

Applications Recommended Dilution

IHC 1:100-1:300

Data



Immunohistochemistry of paraffin-embedded Human brain tissue using ITIH2 Polyclonal Antibody at dilution of 1:70(×200)

Preparation & Storage

Storage Store at -20°C. Avoid freeze / thaw cycles.

Background

The inter-alpha-trypsin inhibitors (ITI) are a family of structurally related plasma serine protease inhibitors involved in extracellular matrix stabilization and in prevention of tumor metastasis. The ITI family contains multiple proteins made up of a light chain (see MIM 176870) and a variable number of heavy chains; ITIH2 (Inter-Alpha-Trypsin Inhibitor Heavy Chain 2) is a Protein Coding gene. Among its related pathways are Cell adhesion_Cell-matrix glycoconjugates. GO annotations related to this gene include serine-type endopeptidase inhibitor activity and endopeptidase inhibitor activity. An important paralog of this gene is ITIH3.

For Research Use Only