

VCL Polyclonal Antibody

Catalog No. E-AB-53202

Note: Centrifuge before opening to ensure complete recovery of vial contents.

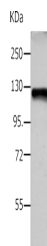
Description

Reactivity	Human, Mouse, Rat
Immunogen	Synthetic peptide of human VCL
Host	Rabbit
Isotype	IgG
Purification	Antigen affinity purification
Conjugation	Unconjugated
Buffer	PBS with 0.05% NaN ₃ and 40% Glycerol, pH7.4

Applications Recommended Dilution

WB 1:1000-1:4000,
ELISA
1:5000-1:240000

Data



Western blot analysis of HeLa cells using VCL Polyclonal Antibody at dilution of 1:1200
Observed Mw: Refer to figures
Calculated Mw: 123 kDa

Preparation & Storage

Storage Store at -20°C. Avoid freeze / thaw cycles.

Background

Vinculin belongs to the vinculin/alpha-catenin family. It is an actin filament (F-actin)-binding protein which involved in cell-matrix adhesion and cell-cell adhesion. Vinculin is a cytoskeletal protein associated with cell-cell and cell-matrix junctions. Vinculin regulates cell-surface E-cadherin expression and potentiates mechanosensing by the E-cadherin complex. It plays an important role in cell morphology and locomotion.

For Research Use Only