

ZWILCH Polyclonal Antibody

Catalog No. E-AB-53208

Note: Centrifuge before opening to ensure complete recovery of vial contents.

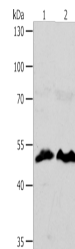
Description

Reactivity	Human, Mouse
Immunogen	Synthetic peptide of human ZWILCH
Host	Rabbit
Isotype	IgG
Purification	Antigen affinity purification
Conjugation	Unconjugated
Buffer	PBS with 0.05% NaN ₃ and 40% Glycerol, pH7.4

Applications Recommended Dilution

WB 1:1000-1:5000

Data



Western blot analysis of HT29 cells hela cells using ZWILCH Polyclonal Antibody at dilution of 1:1750

Observed Mw: Refer to figures
Calculated Mw: 67 kDa

Preparation & Storage

Storage Store at -20°C. Avoid freeze / thaw cycles.

Background

This protein is essential component of the mitotic checkpoint, which prevents cells from prematurely exiting mitosis. And it is required for the assembly of the dynein-dynactin and MAD1-MAD2 complexes onto kinetochores. ZWILCH gene is deleted in a patient suffering from colorectal cancer with chromosomal instability.

For Research Use Only