

ZADH2 Polyclonal Antibody

Catalog No. E-AB-53216

Note: Centrifuge before opening to ensure complete recovery of vial contents.

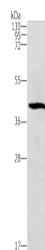
Description

| | |
|---------------------|---------------------------------------------------------|
| Reactivity | Human, Mouse |
| Immunogen | Synthetic peptide of human ZADH2 |
| Host | Rabbit |
| Isotype | IgG |
| Purification | Antigen affinity purification |
| Conjugation | Unconjugated |
| Buffer | PBS with 0.05% NaN ₃ and 40% Glycerol, pH7.4 |

Applications Recommended Dilution

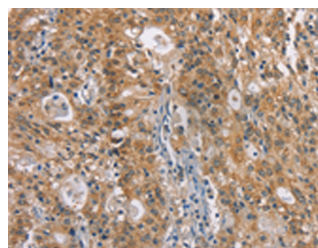
| | |
|------------|--------------|
| WB | 1:500-1:2000 |
| IHC | 1:100-1:300 |

Data

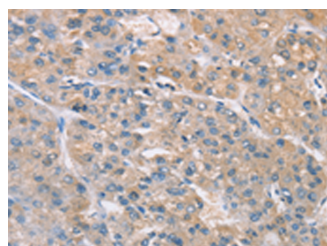


Western blot analysis of Mouse brain tissue using ZADH2 Polyclonal Antibody at dilution of 1:1000

Observed Mw: Refer to figures
Calculated Mw: 40 kDa



Immunohistochemistry of paraffin-embedded Human gastric cancer tissue using ZADH2 Polyclonal Antibody at dilution of 1:100(×200)



Immunohistochemistry of paraffin-embedded Human liver cancer tissue using ZADH2 Polyclonal Antibody at dilution of 1:100(×200)

Preparation & Storage

Storage Store at -20°C. Avoid freeze / thaw cycles.

For Research Use Only

Background

ZADH2 (zinc binding alcohol dehydrogenase domain containing 2) is a 377 amino acid protein that belongs to the zinc-containing alcohol dehydrogenase family and is encoded by a gene which maps to human chromosome 18. Chromosome 18 houses over 300 protein-coding genes and contains nearly 76 million bases. There are a variety of diseases associated with defects in chromosome 18-localized genes, some of which include Trisomy 18 (also known as Edwards syndrome), Niemann-Pick disease, hereditary hemorrhagic telangiectasia, erythropoietic protoporphyria and follicular lymphomas.