

# ZBTB2 Polyclonal Antibody

Catalog Number:E-AB-53223



**Note:** Centrifuge before opening to ensure complete recovery of vial contents.

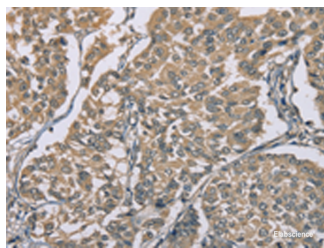
## Description

<b>Reactivity</b>	Human
<b>Immunogen</b>	Synthetic peptide of human ZBTB2
<b>Host</b>	Rabbit
<b>Isotype</b>	IgG
<b>Purification</b>	Antigen affinity purification
<b>Conjugation</b>	Unconjugated
<b>Formulation</b>	PBS with 0.05% NaN <sub>3</sub> and 40% Glycerol,pH7.4

## Applications Recommended Dilution

<b>IHC</b>	1:50-1:200
<b>ELISA</b>	1:2000-1:5000

## Data



Immunohistochemistry of paraffin-embedded Human breast cancer tissue using ZBTB2 Polyclonal Antibody at dilution of 1:50(×200)

## Preparation & Storage

**Storage** Store at -20°C. Avoid freeze / thaw cycles.

## Background

ZBTB2 is a 514 amino acid nuclear protein that contains one BTB (POZ) domain and 4 C2H2-type zinc fingers. ZBTB25, also known as ZNF46 or KUP, is a 435 amino acid nuclear protein that is expressed mainly in hematopoietic cells and testis and contains one BTB (POZ) domain and 2 C2H2-type zinc fingers.

## For Research Use Only

A Reliable Research Partner in Life Science and Medicine

Toll-free: 1-888-852-8623

Web: [www.elabscience.com](http://www.elabscience.com)

Tel: 1-832-243-6086

Email: [techsupport@elabscience.com](mailto:techsupport@elabscience.com)

Fax: 1-832-243-6017