

## ZBTB26 Polyclonal Antibody

Catalog No. E-AB-53226

**Note:** Centrifuge before opening to ensure complete recovery of vial contents.

### Description

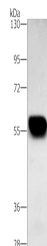
<b>Reactivity</b>	Human, Mouse
<b>Immunogen</b>	Synthetic peptide of human ZBTB26
<b>Host</b>	Rabbit
<b>Isotype</b>	IgG
<b>Purification</b>	Antigen affinity purification
<b>Conjugation</b>	Unconjugated
<b>Buffer</b>	PBS with 0.05% NaN <sub>3</sub> and 40% Glycerol, pH7.4

### Applications

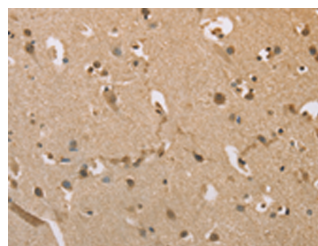
### Recommended Dilution

**WB 1:1000-1:5000,**  
**IHC 1:50-1:200,**  
**ELISA**  
**1:2000-1:10000**

### Data



Western blot analysis of Mouse heart tissue using ZBTB26 Polyclonal Antibody at dilution of 1:500  
**Observed Mw:Refer to figures**  
**Calculated Mw:50 kDa**



Immunohistochemistry of paraffin-embedded Human brain tissue using ZBTB26 Polyclonal Antibody at dilution of 1:50 (x200)

### Preparation & Storage

**Storage** Store at -20°C. Avoid freeze / thaw cycles.

### Background

Zinc finger and BTB domain-containing protein 26 (ZBTB26), also known as ZNF481, is a 441 amino acid member of the Krüppel C2H2-type zinc-finger protein family. Localized to the nucleus, ZBTB26 contains a BTB domain, also known as a POZ domain, which inhibits DNA binding and mediates homotypic and heterotypic dimerization. Characteristics of the BTB domain suggest that ZBTB26 functions as a transcription regulator.

### For Research Use Only