

## ZBTB7A Polyclonal Antibody

**Catalog No.** E-AB-53231

*Note:* Centrifuge before opening to ensure complete recovery of vial contents.

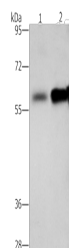
### Description

<b>Reactivity</b>	Human, Mouse, Rat
<b>Immunogen</b>	Synthetic peptide of human ZBTB7A
<b>Host</b>	Rabbit
<b>Isotype</b>	IgG
<b>Purification</b>	Antigen affinity purification
<b>Conjugation</b>	Unconjugated
<b>Buffer</b>	PBS with 0.05% NaN <sub>3</sub> and 40% Glycerol,pH7.4

### Applications Recommended Dilution

**WB** 1:500-1:2000

### Data



Western blot analysis of Hepg2 cells NIH/3T3 cells using ZBTB7A Polyclonal Antibody at dilution of 1:500

**Observed Mw:Refer to figures**  
**Calculated Mw:61 kDa**

### Preparation & Storage

**Storage** Store at -20°C. Avoid freeze / thaw cycles.

### Background

LRF, formerly identified as Pokemon, is a poxvirus zinc finger (POZ) domain-containing transcription factor that influences cell differentiation. LRF (for leukemia/lymphoma related factor) is also known as zinc finger and BTB domain containing 7A, ZBTB7, TIP21, FBI1 and FBI-1. POZ-domain transcription factors contain a POZ or BTB type protein-protein interaction domain at their N-terminus and Kruppel-type zinc fingers at their C-terminus. LRF is inducible during both murine and human preadipocyte differentiation and may contribute to adipogenesis through influencing the switch from cellular proliferation to terminal differentiation.

### For Research Use Only