

ZIC5 Polyclonal Antibody

Catalog Number:E-AB-53239



Note: Centrifuge before opening to ensure complete recovery of vial contents.

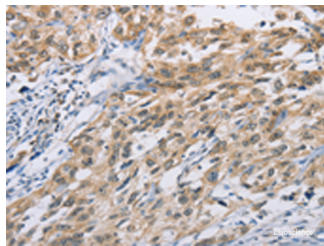
Description

Reactivity	Human, Mouse
Immunogen	Synthetic peptide of human ZIC5
Host	Rabbit
Isotype	IgG
Purification	Antigen affinity purification
Conjugation	Unconjugated
Formulation	PBS with 0.05% NaN ₃ and 40% Glycerol,pH7.4

Applications Recommended Dilution

IHC	1:100-1:300
ELISA	1:2000-1:5000

Data



Immunohistochemistry of paraffin-embedded Human esophagus cancer tissue using ZIC5 Polyclonal Antibody at dilution of 1:100(×200)

Preparation & Storage

Storage Store at -20°C. Avoid freeze / thaw cycles.

Background

This gene encodes a member of the ZIC family of C2H2-type zinc finger proteins. Members of this family are important during development, and have been associated X-linked visceral heterotaxy and holoprosencephaly type 5. This gene is closely linked to a gene encoding zinc finger protein of the cerebellum 2, a related family member on chromosome 13.

For Research Use Only

A Reliable Research Partner in Life Science and Medicine

Toll-free: 1-888-852-8623

Web: www.elabscience.com

Tel: 1-832-243-6086

Email: techsupport@elabscience.com

Fax: 1-832-243-6017