

CHRM4 Polyclonal Antibody

Catalog No. E-AB-53246

Note: Centrifuge before opening to ensure complete recovery of vial contents.

Description

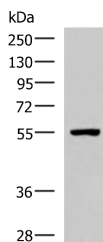
Reactivity	Human, Mouse, Rat
Immunogen	Synthetic peptide of human CHRM4
Host	Rabbit
Isotype	IgG
Purification	Antigen affinity purification
Conjugation	Unconjugated
Buffer	PBS with 0.05% NaN ₃ and 40% Glycerol, pH7.4

Applications

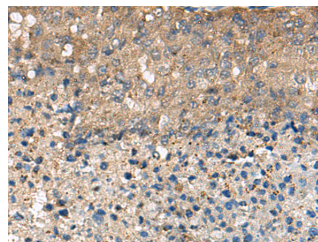
Recommended Dilution

WB 1:1000-1:5000,
IHC 1:100-1:300,
ELISA
1:5000-1:10000

Data



Western blot analysis of A549 cell lysate using CHRM4 Polyclonal Antibody at dilution of 1:1350
Observed Mw:Refer to figures
Calculated Mw:53 kDa



Immunohistochemistry of paraffin-embedded Human liver cancer tissue using CHRM4 Polyclonal Antibody at dilution of 1:110(x200)

Preparation & Storage

Storage Store at -20°C. Avoid freeze / thaw cycles.

Background

The muscarinic cholinergic receptors belong to a larger family of G protein-coupled receptors. The functional diversity of these receptors is defined by the binding of acetylcholine and includes cellular responses such as adenylate cyclase inhibition, phosphoinositide degeneration, and potassium channel mediation. Muscarinic receptors influence many effects of acetylcholine in the central and peripheral nervous system. The clinical implications of this receptor are unknown; however, mouse studies link its function to adenylyl cyclase inhibition.

For Research Use Only