

## CSNK2B Polyclonal Antibody

**Catalog No.** E-AB-53247

*Note:* Centrifuge before opening to ensure complete recovery of vial contents.

### Description

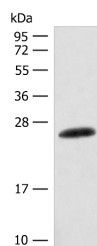
|                     |   |
|---------------------|---|
| <b>Reactivity</b>   | Human, Mouse, Rat                                       |
| <b>Immunogen</b>    | Synthetic peptide of human CSNK2B                       |
| <b>Host</b>         | Rabbit  |
| <b>Isotype</b>      | IgG   |
| <b>Purification</b> | Antigen affinity purification                           |
| <b>Conjugation</b>  | Unconjugated  |
| <b>Buffer</b>       | PBS with 0.05% NaN <sub>3</sub> and 40% Glycerol, pH7.4 |

### Applications

### Recommended Dilution

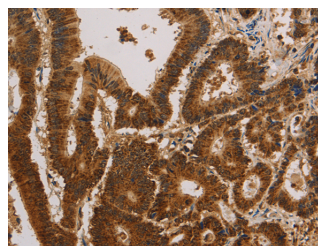
|            |              |
|------------|--------------|
| <b>WB</b>  | 1:500-1:2000 |
| <b>IHC</b> | 1:50-1:200   |

### Data

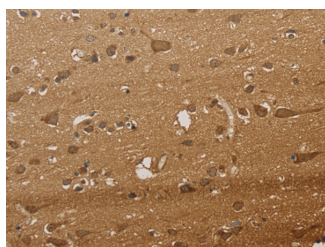


Western blot analysis of Mouse skin tissue lysate using CSNK2B Polyclonal Antibody at dilution of 1:400

**Observed Mw: Refer to figures**  
**Calculated Mw: 25 kDa**



Immunohistochemistry of paraffin-embedded Human colon cancer tissue using CSNK2B Polyclonal Antibody at dilution of 1:30 (×200)



Immunohistochemistry of paraffin-embedded Human brain tissue using CSNK2B Polyclonal Antibody at dilution of 1:30 (×200)

### Preparation & Storage

#### For Research Use Only

**Storage**                      Store at -20°C. Avoid freeze / thaw cycles.

## Background

This gene encodes the beta subunit of casein kinase II, a ubiquitous protein kinase which regulates metabolic pathways, signal transduction, transcription, translation, and replication. The enzyme is composed of three subunits, alpha, alpha prime and beta, which form a tetrameric holoenzyme. The alpha and alpha prime subunits are catalytic, while the beta subunit serves regulatory functions. The enzyme localizes to the endoplasmic reticulum and the Golgi apparatus.