

POMC Polyclonal Antibody

Catalog No. E-AB-53251

Note: Centrifuge before opening to ensure complete recovery of vial contents.

Description

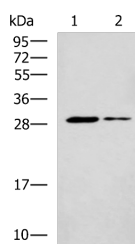
Reactivity	Human, Mouse, Rat
Immunogen	Synthetic peptide of human POMC
Host	Rabbit
Isotype	IgG
Purification	Antigen affinity purification
Conjugation	Unconjugated
Buffer	PBS with 0.05% NaN ₃ and 40% Glycerol, pH7.4

Applications

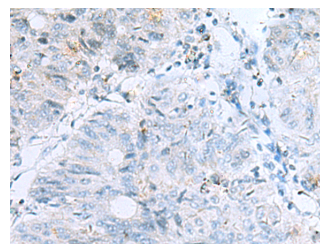
Recommended Dilution

WB	1:500-1:2000
IHC	1:25-1:50

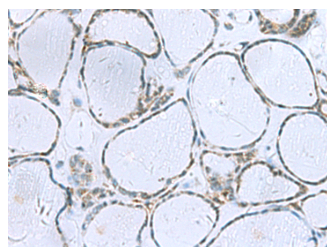
Data



Western blot analysis of Mouse liver tissue and Mouse skeletal muscle tissue lysates using POMC Polyclonal Antibody at dilution of 1:800
Observed Mw: Refer to figures
Calculated Mw: 29 kDa



Immunohistochemistry of paraffin-embedded Human colorectal cancer tissue using POMC Polyclonal Antibody at dilution of 1:35(×200)



Immunohistochemistry of paraffin-embedded Human thyroid cancer tissue using POMC Polyclonal Antibody at dilution of 1:35(×200)

Preparation & Storage

For Research Use Only

Storage Store at -20°C. Avoid freeze / thaw cycles.

Background

Pro-opiomelanocortin (POMC) is a prohormone that encodes multiple smaller peptide hormones within its structure. POMC plays important roles in many pathological and physiological processes, including regulating energy metabolism, immune reactions, and sexual functions. POMC expression differs quantitatively and qualitatively among most normal tissues. The large molecule of POMC is the source of several important biologically active substances. POMC can be cleaved enzymatically into the following peptides: d NPP, γ -MSH, ACTH, α -MSH, CLIP, Lipotropin β , Lipotropin γ , β -MSH, β endorphin and Met-enkephalin.

For Research Use Only