

CDK1 Polyclonal Antibody

Catalog No. E-AB-30844

Note: Centrifuge before opening to ensure complete recovery of vial contents.

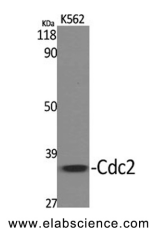
Description

Reactivity	Human,Mouse,Rat
Immunogen	Synthesized peptide derived from human Cdc2 around the non-phosphorylation site of Tyr15.
Host	Rabbit
Isotype	IgG
Purification	Affinity purification
Conjugation	Unconjugated
Buffer	PBS with 0.02% sodium azide, 0.5% protective protein and 50% glycerol, pH7.4

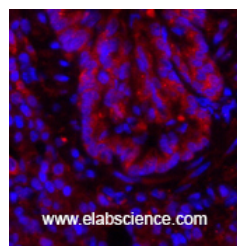
Applications Recommended Dilution

WB	1:500-1:2000
IF	1:50-1:200
ELISA	1:10000

Data



Western Blot analysis of K562 cells using CDK1 Polyclonal Antibody at dilution of 1:2000.
Observed Mw:34kDa
Calculated Mw:34kDa



Immunofluorescence analysis of Rat lung tissue using CDK1 Polyclonal Antibody at dilution of 1:200.

Preparation & Storage

Storage Store at -20°C. Avoid freeze / thaw cycles.

Background

Plays a key role in the control of the eukaryotic cell cycle. It is required in higher cells for entry into S-phase and mitosis. p34 is a component of the kinase complex that phosphorylates the repetitive C-terminus of RNA polymerase II.

For Research Use Only