

## ELOVL6 Polyclonal Antibody

**Catalog No.** E-AB-53313

*Note:* Centrifuge before opening to ensure complete recovery of vial contents.

### Description

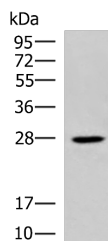
<b>Reactivity</b>	Human, Mouse
<b>Immunogen</b>	Synthetic peptide of human ELOVL6
<b>Host</b>	Rabbit
<b>Isotype</b>	IgG
<b>Purification</b>	Antigen affinity purification
<b>Conjugation</b>	Unconjugated
<b>Buffer</b>	PBS with 0.05% NaN <sub>3</sub> and 40% Glycerol, pH7.4

### Applications

### Recommended Dilution

**WB 1:500-1:2000,  
ELISA  
1:5000-1:10000**

### Data



Western blot analysis of Mouse brain tissue lysate using ELOVL6 Polyclonal Antibody at dilution of 1:500

**Observed Mw: Refer to figures**  
**Calculated Mw: 31 kDa**

### Preparation & Storage

**Storage** Store at -20°C. Avoid freeze / thaw cycles.

### Background

Fatty acid elongases (EC 6.2.1.3), such as ELOVL6, use malonyl-CoA as a 2-carbon donor in the first and rate-limiting step of fatty acid elongation

### For Research Use Only