

CDC23 Polyclonal Antibody

Catalog No. E-AB-30847

Note: Centrifuge before opening to ensure complete recovery of vial contents.

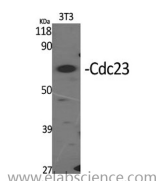
Description

Reactivity	Human, Mouse, Monkey
Immunogen	Synthesized peptide derived from the Internal region of human Cdc23
Host	Rabbit
Isotype	IgG
Purification	Affinity purification
Buffer	PBS with 0.02% sodium azide, 0.5% protective protein and 50% glycerol pH 7.4.

Applications Recommended Dilution

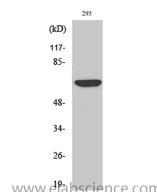
WB	1:500-1:2000
ELISA	1:20000

Data



Western Blot analysis of 3T3 cells using Cdc23 Polyclonal Antibody at dilution of 1:2000.

Observed Mw:69kDa
Calculated Mw:68kDa



Western Blot analysis of 293 cells using Cdc23 Polyclonal Antibody at dilution of 1:2000.

Preparation & Storage

Storage Store at -20°C. Avoid freeze / thaw cycles.

Background

The protein encoded by this gene shares strong similarity with *Saccharomyces cerevisiae* Cdc23, a protein essential for cell cycle progression through the G2/M transition. This protein is a component of anaphase-promoting complex (APC), which is composed of eight protein subunits and highly conserved in eukaryotic cells. APC catalyzes the formation of cyclin B-ubiquitin conjugate that is responsible for the ubiquitin-mediated proteolysis of B-type cyclins.

For Research Use Only