

Note: Centrifuge before opening to ensure complete recovery of vial contents.

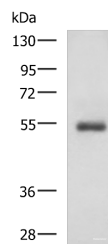
Description

Reactivity	Human
Immunogen	Synthetic peptide of human RHCG
Host	Rabbit
Isotype	IgG
Purification	Antigen affinity purification
Conjugation	Unconjugated
Formulation	PBS with 0.05% NaN ₃ and 40% Glycerol,pH7.4

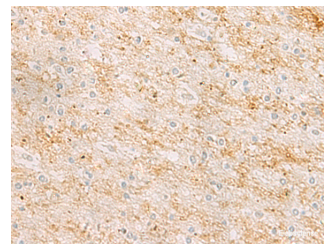
Applications Recommended Dilution

WB	1:500-1:2000
IHC	1:25-1:50
ELISA	1:5000-1:10000

Data



Western blot analysis of Human 2-3 grade invasive ductal breast tissue lysate using RHCG Polyclonal Antibody at dilution of 1:600
Observed Mw:Refer to figures
Calculated Mw:53 kDa



Immunohistochemistry of paraffin-embedded Human brain tissue using RHCG Polyclonal Antibody at dilution of 1:25(×200)

Preparation & Storage

Storage Store at -20°C. Avoid freeze / thaw cycles.

Background

RHCG (Rhesus blood group family type C glycoprotein), also known as RHGK (Rh glycoprotein kidney), PDRC2 (tumor-related protein DRC2) or SLC42A3, is a multi-pass membrane protein with three potential N-glycosylation sites that belongs to the Rh subfamily of the ammonium transporter family. Expressed in a wide variety of tissues with predominant expression in adult and fetal kidney, RHCG localizes to the apical and/or basolateral cell membrane (depending on the species) and is believed to function as a non-erythroid, bidirectional, electroneutral ammonium transporter.

For Research Use Only

A Reliable Research Partner in Life Science and Medicine

Toll-free: 1-888-852-8623

Web: www.elabscience.com

Tel: 1-832-243-6086

Email: techsupport@elabscience.com

Fax: 1-832-243-6017