

# ENTPD1 Polyclonal Antibody

Catalog Number:E-AB-53347

**Note:** Centrifuge before opening to ensure complete recovery of vial contents.

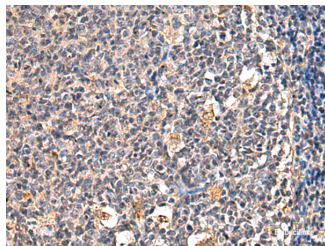
## Description

<b>Reactivity</b>	Human, Mouse, Rat
<b>Immunogen</b>	Synthetic peptide of human ENTPD1
<b>Host</b>	Rabbit
<b>Isotype</b>	IgG
<b>Purification</b>	Antigen affinity purification
<b>Conjugation</b>	Unconjugated
<b>Formulation</b>	PBS with 0.05% NaN <sub>3</sub> and 40% Glycerol,pH7.4

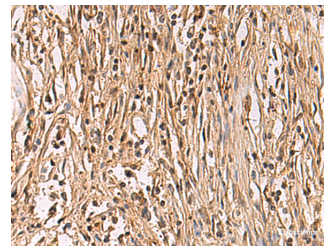
## Applications Recommended Dilution

<b>IHC</b>	1:50-1:100
<b>ELISA</b>	1:5000-1:10000

## Data



Immunohistochemistry of paraffin-embedded Human tonsil tissue using ENTPD1 Polyclonal Antibody at dilution of 1:60(×200)



Immunohistochemistry of paraffin-embedded Human colorectal cancer tissue using ENTPD1 Polyclonal Antibody at dilution of 1:60(×200)

## Preparation & Storage

**Storage** Store at -20°C. Avoid freeze / thaw cycles.

## Background

ENTPD1(Ectonucleoside triphosphate diphosphohydrolase 1) is also named as CD39,NTPDase 1,Ecto-ATPDase 1 and belongs to the GDA1/CD39 NTPase family. In the nervous system,it can hydrolyze ATP and other nucleotides to regulate purinergic neurotransmission.It is a noncovalent tetrameric protein and that detergent inhibition of enzymatic activity is caused by dissociation of ectoapyrase tetramers into monomers.And it is a 70- to 100-kDa protein that is heavily N-glycosylated. This protein has 6 glycosylation sites and 3 isoforms(58 kDa,59 kDa and 34 kDa) produced by alternative splicing. The soluble isoform of CD39(38-478 amino acid) locates to the extracellular part and this antibody can recognize the soluble form of CD39 (38-478aa) molecule.

## For Research Use Only

A Reliable Research Partner in Life Science and Medicine

Toll-free: 1-888-852-8623

Web: [www.elabscience.com](http://www.elabscience.com)

Tel: 1-832-243-6086

Email: [techsupport@elabscience.com](mailto:techsupport@elabscience.com)

Fax: 1-832-243-6017