

ALDH2 Polyclonal Antibody

Catalog No. E-AB-53361

Note: Centrifuge before opening to ensure complete recovery of vial contents.

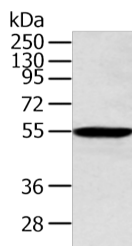
Description

Reactivity	Human, Mouse, Rat
Immunogen	Synthetic peptide of human ALDH2
Host	Rabbit
Isotype	IgG
Purification	Antigen affinity purification
Conjugation	Unconjugated
Buffer	PBS with 0.05% NaN ₃ and 40% Glycerol, pH7.4

Applications Recommended Dilution

WB 1:500-1:2000

Data



Western blot analysis of Human lung cancer tissue using ALDH2 Polyclonal Antibody at dilution of 1:300

Observed Mw: Refer to figures

Calculated Mw: 56 kDa

Preparation & Storage

Storage Store at -20°C. Avoid freeze / thaw cycles.

Background

This protein belongs to the aldehyde dehydrogenase family of proteins. Aldehyde dehydrogenase is the second enzyme of the major oxidative pathway of alcohol metabolism. Two major liver isoforms of aldehyde dehydrogenase, cytosolic and mitochondrial, can be distinguished by their electrophoretic mobilities, kinetic properties, and subcellular localizations. Most Caucasians have two major isozymes, while approximately 50% of Orientals have the cytosolic isozyme but not the mitochondrial isozyme.

For Research Use Only