

## E2F5 Polyclonal Antibody

**Catalog No.** E-AB-53373

*Note:* Centrifuge before opening to ensure complete recovery of vial contents.

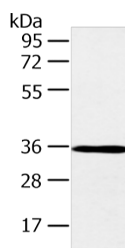
### Description

<b>Reactivity</b>	Human, Mouse, Rat
<b>Immunogen</b>	Synthetic peptide of human E2F5
<b>Host</b>	Rabbit
<b>Isotype</b>	IgG
<b>Purification</b>	Antigen affinity purification
<b>Conjugation</b>	Unconjugated
<b>Buffer</b>	PBS with 0.05% NaN <sub>3</sub> and 40% Glycerol,pH7.4

### Applications Recommended Dilution

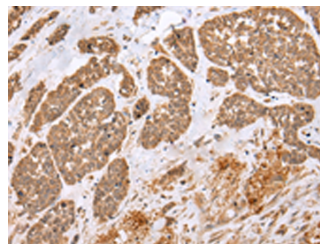
**WB 1:500-1:2000,**  
**IHC 1:25-1:100,**  
**ELISA 1:2000-1:5000**

### Data



Western blot analysis of K562 cell and mouse brain tissue using E2F5 Polyclonal Antibody at dilution of 1:400

**Observed Mw:Refer to figures**  
**Calculated Mw:38 kDa**



Immunohistochemistry of paraffin-embedded Human esophagus cancer tissue using E2F5 Polyclonal Antibody at dilution of 1:25(×200)

### Preparation & Storage

**Storage** Store at -20°C. Avoid freeze / thaw cycles.

### Background

The protein encoded by this gene is a member of the E2F family of transcription factors. The E2F family plays a crucial role in the control of cell cycle and action of tumor suppressor proteins and is also a target of the transforming proteins of small DNA tumor viruses. The E2F proteins contain several evolutionarily conserved domains that are present in most members of the family.

### For Research Use Only