

## CDC42EP2 Polyclonal Antibody

**Catalog No.** E-AB-30854

*Note:* Centrifuge before opening to ensure complete recovery of vial contents.

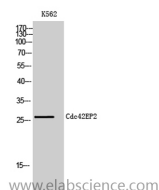
### Description

<b>Reactivity</b>	Human,Mouse,Rat
<b>Immunogen</b>	Synthesized peptide derived from the N-terminal region of human Cdc42EP2
<b>Host</b>	Rabbit
<b>Isotype</b>	IgG
<b>Purification</b>	Affinity purification
<b>Buffer</b>	PBS with 0.02% sodium azide,0.5% protective protein and 50% glycerol pH 7.4.

### Applications Recommended Dilution

<b>WB</b>	1:500-1:2000
<b>IHC</b>	1:100-1:300
<b>ELISA</b>	1:40000

### Data



Western Blot analysis of K562 cells with Cdc42EP2  
Polyclonal Antibody.  
**Observed Mw:28kDa**  
**Calculated Mw:22kDa**

### Preparation & Storage

**Storage** Store at -20°C. Avoid freeze / thaw cycles.

### Background

CDC42, a small Rho GTPase, regulates the formation of F-actin-containing structures through its interaction with the downstream effector proteins. The protein encoded by this gene is a member of the Borg family of CDC42 effector proteins. Borg family proteins contain a CRIB (Cdc42/Rac interactive-binding) domain. They bind to, and negatively regulate the function of CDC42. Coexpression of this protein with CDC42 suggested a role of this protein in actin filament assembly and cell shape control.

### For Research Use Only