

## MTNR1B Polyclonal Antibody

Catalog No. E-AB-53402

**Note:** Centrifuge before opening to ensure complete recovery of vial contents.

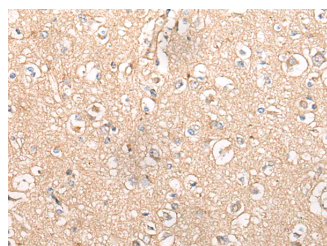
### Description

<b>Reactivity</b>	Human
<b>Immunogen</b>	Synthetic peptide of human MTNR1B
<b>Host</b>	Rabbit
<b>Isotype</b>	IgG
<b>Purification</b>	Antigen affinity purification
<b>Conjugation</b>	Unconjugated
<b>Buffer</b>	PBS with 0.05% NaN <sub>3</sub> and 40% Glycerol,pH7.4

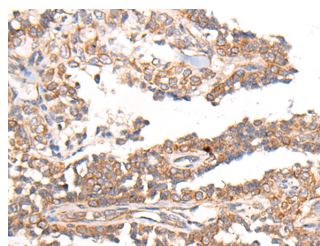
### Applications Recommended Dilution

**IHC** 1:30-1:150

### Data



Immunohistochemistry of paraffin-embedded Human brain tissue using MTNR1B Polyclonal Antibody at dilution of 1:55(x200)



Immunohistochemistry of paraffin-embedded Human ovarian cancer tissue using MTNR1B Polyclonal Antibody at dilution of 1:55(x200)

### Preparation & Storage

**Storage** Store at -20°C. Avoid freeze / thaw cycles.

### Background

This gene encodes one of two high affinity forms of a receptor for melatonin, the primary hormone secreted by the pineal gland. This gene product is an integral membrane protein that is a G-protein coupled, 7-transmembrane receptor. It is found primarily in the retina and brain although this detection requires RT-PCR. It is thought to participate in light-dependent functions in the retina and may be involved in the neurobiological effects of melatonin.

### For Research Use Only