

# NANOS1 Polyclonal Antibody

Catalog Number:E-AB-53421



**Note:** Centrifuge before opening to ensure complete recovery of vial contents.

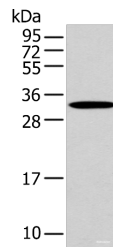
## Description

|                     |  |
|---------------------|--|
| <b>Reactivity</b>   | Human, Mouse   |
| <b>Immunogen</b>    | Synthetic peptide of human NANOS1                      |
| <b>Host</b>         | Rabbit   |
| <b>Isotype</b>      | IgG  |
| <b>Purification</b> | Antigen affinity purification                          |
| <b>Conjugation</b>  | Unconjugated   |
| <b>Formulation</b>  | PBS with 0.05% NaN <sub>3</sub> and 40% Glycerol,pH7.4 |

## Applications Recommended Dilution

|              |                |
|--------------|----------------|
| <b>WB</b>    | 1:500-1:2000   |
| <b>ELISA</b> | 1:5000-1:10000 |

## Data



Western blot analysis of Mouse muscle tissue using NANOS1 Polyclonal Antibody at dilution of 1:500

**Observed Mw:Refer to figures**  
**Calculated Mw:30 kDa**

## Preparation & Storage

**Storage** Store at -20°C. Avoid freeze / thaw cycles.

## Background

NANOS1 (Nanos C2HC-Type Zinc Finger 1) is a Protein Coding gene. Diseases associated with NANOS1 include Spermatogenic Failure 12. GO annotations related to this gene include RNA binding and translation repressor activity. An important paralog of this gene is NANOS3. This gene encodes a CCHC-type zinc finger protein that is a member of the nanos family. This protein co-localizes with the RNA-binding protein pumilio RNA-binding family member 2 and may be involved in regulating translation as a post-transcriptional repressor. Mutations in this gene are associated with spermatogenic impairment.

## For Research Use Only

A Reliable Research Partner in Life Science and Medicine

Toll-free: 1-888-852-8623

Web: [www.elabscience.com](http://www.elabscience.com)

Tel: 1-832-243-6086

Email: [techsupport@elabscience.com](mailto:techsupport@elabscience.com)

Fax: 1-832-243-6017