

## GPC2 Polyclonal Antibody

Catalog No. E-AB-53439

**Note:** Centrifuge before opening to ensure complete recovery of vial contents.

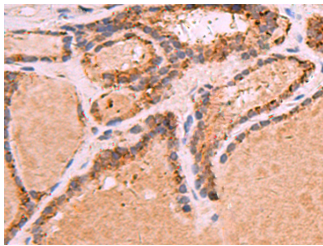
### Description

<b>Reactivity</b>	Human
<b>Immunogen</b>	Synthetic peptide of human GPC2
<b>Host</b>	Rabbit
<b>Isotype</b>	IgG
<b>Purification</b>	Antigen affinity purification
<b>Conjugation</b>	Unconjugated
<b>Buffer</b>	PBS with 0.05% NaN <sub>3</sub> and 40% Glycerol, pH7.4

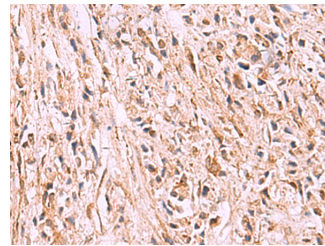
### Applications Recommended Dilution

<b>IHC</b>	1:30-1:150
------------	------------

### Data



Immunohistochemistry of paraffin-embedded Human thyroid cancer tissue using GPC2 Polyclonal Antibody at dilution of 1:35(×200)



Immunohistochemistry of paraffin-embedded Human prostate cancer tissue using GPC2 Polyclonal Antibody at dilution of 1:35(×200)

### Preparation & Storage

**Storage** Store at -20°C. Avoid freeze / thaw cycles.

### Background

Cell surface proteoglycan that bears heparan sulfate. May fulfill a function related to the motile behaviors of developing neurons (By similarity).

### For Research Use Only