

CDK10 Polyclonal Antibody

Catalog No. E-AB-30864

Note: Centrifuge before opening to ensure complete recovery of vial contents.

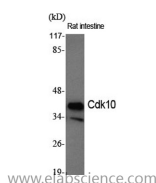
Description

Reactivity	Human,Mouse,Rat
Immunogen	Synthesized peptide derived from the Internal region of human Cdk10
Host	Rabbit
Isotype	IgG
Purification	Affinity purification
Buffer	PBS with 0.02% sodium azide,0.5% protective protein and 50% glycerol pH 7.4.

Applications Recommended Dilution

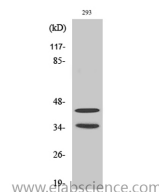
WB	1:500-1:2000
IHC	1:100-1:300
ELISA	1:10000

Data



Western Blot analysis of Rat intestine cells using Cdk10 Polyclonal Antibody at dilution of 1:500.

Observed Mw:43kDa
Calculated Mw:41kDa



Western Blot analysis of 293 cells using Cdk10 Polyclonal Antibody at dilution of 1:500.

Preparation & Storage

Storage Store at -20°C. Avoid freeze / thaw cycles.

Background

The protein encoded by this gene belongs to the CDK subfamily of the Ser/Thr protein kinase family. The CDK subfamily members are highly similar to the gene products of *S. cerevisiae* cdc28, and *S. pombe* cdc2, and are known to be essential for cell cycle progression. This kinase has been shown to play a role in cellular proliferation and its function is limited to cell cycle G2-M phase. Multiple transcript variants encoding different isoforms have been found for this gene.

For Research Use Only