

IQGAP1 Polyclonal Antibody

Catalog No. E-AB-53496

Note: Centrifuge before opening to ensure complete recovery of vial contents.

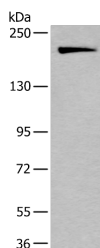
Description

Reactivity	Human, Mouse
Immunogen	Synthetic peptide of human IQGAP1
Host	Rabbit
Isotype	IgG
Purification	Antigen affinity purification
Conjugation	Unconjugated
Buffer	PBS with 0.05% NaN ₃ and 40% Glycerol, pH7.4

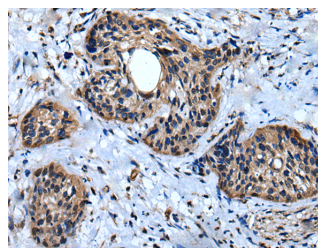
Applications Recommended Dilution

WB	1:500-1:2000
IHC	1:25-1:100

Data



Western blot analysis of HUVEC cell lysate using IQGAP1 Polyclonal Antibody at dilution of 1:300
Observed Mw: Refer to figures
Calculated Mw: 189 kDa



Immunohistochemistry of paraffin-embedded Human cervical cancer tissue using IQGAP1 Polyclonal Antibody at dilution of 1:30 (x200)

Preparation & Storage

Storage Store at -20°C. Avoid freeze / thaw cycles.

Background

This gene encodes a member of the IQGAP family. The protein contains four IQ domains, one calponin homology domain, one Ras-GAP domain and one WW domain. It interacts with components of the cytoskeleton, with cell adhesion molecules, and with several signaling molecules to regulate cell morphology and motility. Expression of the protein is upregulated by gene amplification in two gastric cancer cell lines.

For Research Use Only