

CDK2 Polyclonal Antibody

Catalog No. E-AB-30866

Note: Centrifuge before opening to ensure complete recovery of vial contents.

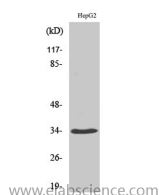
Description

Reactivity	Human,Mouse,Rat
Immunogen	Synthesized peptide derived from human Cdk2 around the non-phosphorylation site of T160.
Host	Rabbit
Isotype	IgG
Purification	Affinity purification
Buffer	PBS with 0.02% sodium azide,0.5% protective protein and 50% glycerol pH 7.4.

Applications Recommended Dilution

WB	1:500-1:2000
ELISA	1:10000

Data



Western Blot analysis of HepG2 cells using Cdk2 Polyclonal Antibody at dilution of 1:500.

Observed Mw:34kDa
Calculated Mw:34kDa

Preparation & Storage

Storage Store at -20°C. Avoid freeze / thaw cycles.

Background

Serine/threonine-protein kinase involved in the control of the cell cycle; essential for meiosis, but dispensable for mitosis.

For Research Use Only