

EFNB1 Polyclonal Antibody

Catalog No. E-AB-53525

Note: Centrifuge before opening to ensure complete recovery of vial contents.

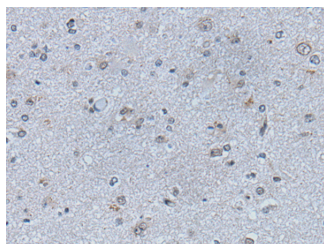
Description

Reactivity	Human, Mouse, Rat
Immunogen	Synthetic peptide of human EFNB1
Host	Rabbit
Isotype	IgG
Purification	Antigen affinity purification
Conjugation	Unconjugated
Buffer	PBS with 0.05% NaN ₃ and 40% Glycerol, pH7.4

Applications Recommended Dilution

IHC	1:30-1:150
------------	------------

Data



Immunohistochemistry of paraffin-embedded Human brain tissue using EFNB1 Polyclonal Antibody at dilution of 1:50(×200)

Preparation & Storage

Storage Store at -20°C. Avoid freeze / thaw cycles.

Background

Ephrin B proteins are thought to play key roles in cellular functions as diverse as neuronal migration and blood vessel development. Ephrin B molecules expressed at the membrane surface bind to the Ephrin B family receptors on target cells during cell to cell contact. This interaction leads to cell signaling in the target cell but also generates a reverse signal in the cell expressing Ephrin B on its surface. This reverse signaling event is thought to be critical for vessel maturation and neuronal development. Importantly, tyrosine phosphorylation of Ephrin B is thought to be a critical component of this reverse signaling event. Recent work demonstrated that Tyr331 of Ephrin B was phosphorylated in HEK293 cells after stimulation by the soluble Ephrin B2 receptor tyrosine kinase.

For Research Use Only