

## ZNF787 Polyclonal Antibody

Catalog No. E-AB-53534

**Note:** Centrifuge before opening to ensure complete recovery of vial contents.

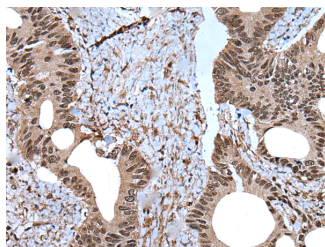
### Description

<b>Reactivity</b>	Human, Mouse
<b>Immunogen</b>	Synthetic peptide of human ZNF787
<b>Host</b>	Rabbit
<b>Isotype</b>	IgG
<b>Purification</b>	Antigen affinity purification
<b>Conjugation</b>	Unconjugated
<b>Buffer</b>	PBS with 0.05% NaN <sub>3</sub> and 40% Glycerol, pH7.4

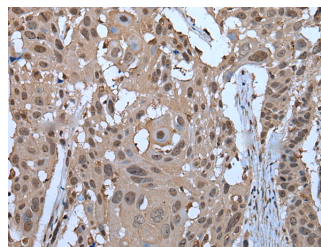
### Applications Recommended Dilution

**IHC** 1:30-1:150

### Data



Immunohistochemistry of paraffin-embedded Human colorectal cancer tissue using ZNF787 Polyclonal Antibody at dilution of 1:45 (x200)



Immunohistochemistry of paraffin-embedded Human esophagus cancer tissue using ZNF787 Polyclonal Antibody at dilution of 1:45 (x200)

### Preparation & Storage

**Storage** Store at -20°C. Avoid freeze / thaw cycles.

### Background

May be involved in transcriptional regulation.

### For Research Use Only