

CDK5 Polyclonal Antibody

Catalog No. E-AB-30868

Note: Centrifuge before opening to ensure complete recovery of vial contents.

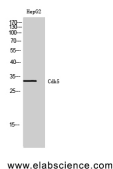
Description

Reactivity	Human,Mouse,Rat
Immunogen	Synthesized peptide derived from human Cdk5 around the non-phosphorylation site of Tyr15.
Host	Rabbit
Isotype	IgG
Purification	Affinity purification
Conjugation	Unconjugated
Buffer	PBS with 0.02% sodium azide, 0.5% protective protein and 50% glycerol, pH7.4

Applications Recommended Dilution

WB	1:500-1:2000
IHC	1:100-1:300
ELISA	1:5000

Data



Western Blot analysis of HepG2 cells using Cdk5
Polyclonal Antibody at dilution of 1:500.
Observed Mw:33kDa
Calculated Mw:33kDa

Preparation & Storage

Storage Store at -20°C. Avoid freeze / thaw cycles.

Background

Probably involved in the control of the cell cycle. Interacts with D1 and D3-type G1 cyclins. Can phosphorylate histone H1, tau, MAP2 and NF-H and NF-M. Also interacts with p35 which activates the kinase.

For Research Use Only