

CASP4 Polyclonal Antibody

Catalog No. E-AB-53537

Note: Centrifuge before opening to ensure complete recovery of vial contents.

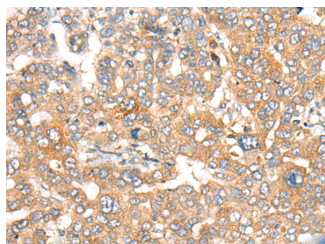
Description

| | |
|---------------------|---|
| Reactivity | Human |
| Immunogen | Synthetic peptide of human CASP4 |
| Host | Rabbit |
| Isotype | IgG |
| Purification | Antigen affinity purification |
| Conjugation | Unconjugated |
| Buffer | PBS with 0.05% NaN ₃ and 40% Glycerol, pH7.4 |

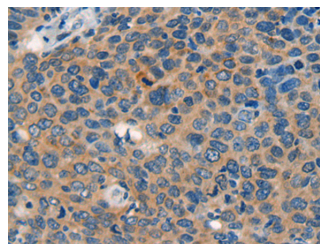
Applications Recommended Dilution

| | |
|------------|------------|
| IHC | 1:30-1:150 |
|------------|------------|

Data



Immunohistochemistry of paraffin-embedded Human liver cancer tissue using CASP4 Polyclonal Antibody at dilution of 1:40(×200)



Immunohistochemistry of paraffin-embedded Human cervical cancer tissue using CASP4 Polyclonal Antibody at dilution of 1:40(×200)

Preparation & Storage

Storage Store at -20°C. Avoid freeze / thaw cycles.

Background

This gene encodes a member of the cysteine proteases that plays important roles in apoptosis, cell migration and the inflammatory response. The encoded protein mediates production of pro-inflammatory cytokines by macrophages upon bacterial infection. Mice lacking the encoded protein are resistant to endotoxic shock induced by lipopolysaccharide. A 5-bp deletion encompassing a splice acceptor junction resulting in alternate splicing and a shorter non-functional isoform in certain mouse strains has been described. Although its official nomenclature is "caspase 4, apoptosis-related cysteine peptidase", this gene and its encoded protein have historically been called caspase 11. This gene is present in a cluster of three caspase genes on chromosome 9.

For Research Use Only