

MYL12B Polyclonal Antibody

Catalog No. E-AB-53541

Note: Centrifuge before opening to ensure complete recovery of vial contents.

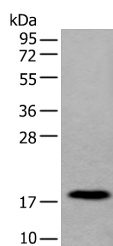
Description

Reactivity	Human, Mouse, Rat
Immunogen	Synthetic peptide of human MYL12B
Host	Rabbit
Isotype	IgG
Purification	Antigen affinity purification
Conjugation	Unconjugated
Buffer	PBS with 0.05% NaN ₃ and 40% Glycerol, pH7.4

Applications Recommended Dilution

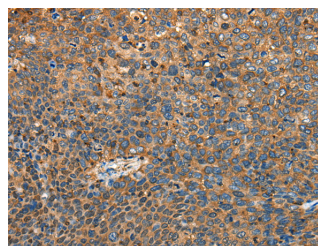
WB	1:500-1:2000
IHC	1:30-1:150

Data

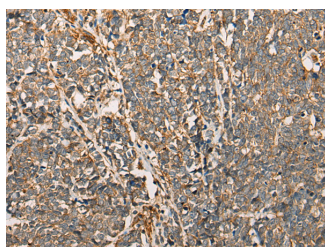


Western blot analysis of Human urinary bladder tissue lysate using MYL12B Polyclonal Antibody at dilution of 1:250

Observed Mw: Refer to figures
Calculated Mw: 20 kDa



Immunohistochemistry of paraffin-embedded Human cervical cancer tissue using MYL12B Polyclonal Antibody at dilution of 1:25 (×200)



Immunohistochemistry of paraffin-embedded Human lung cancer tissue using MYL12B Polyclonal Antibody at dilution of 1:25 (×200)

Preparation & Storage

For Research Use Only

Storage Store at -20°C. Avoid freeze / thaw cycles.

Background

The activity of nonmuscle myosin II (see MYH9; MIM 160775) is regulated by phosphorylation of a regulatory light chain, such as MRLC2. This phosphorylation results in higher MgATPase activity and the assembly of myosin II filaments

For Research Use Only