

XRN1 Polyclonal Antibody

Catalog No. E-AB-53553

Note: Centrifuge before opening to ensure complete recovery of vial contents.

Description

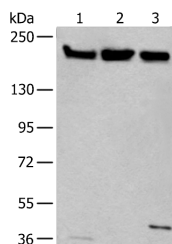
Reactivity	Human, Mouse
Immunogen	Synthetic peptide of human XRN1
Host	Rabbit
Isotype	IgG
Purification	Antigen affinity purification
Conjugation	Unconjugated
Buffer	PBS with 0.05% NaN ₃ and 40% Glycerol, pH7.4

Applications

Recommended Dilution

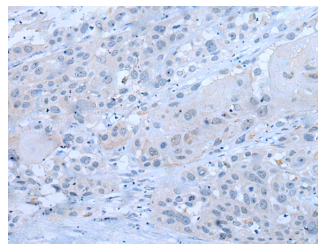
WB 1:500-1:2000,
IHC 1:10-1:50,
ELISA
1:5000-1:10000

Data

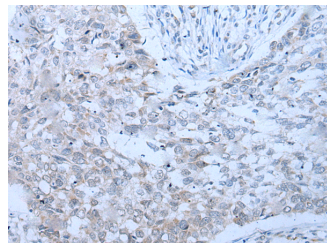


Western blot analysis of HeLa 231 and K562 cell lysates using XRN1 Polyclonal Antibody at dilution of 1:250

Observed Mw: Refer to figures
Calculated Mw: 194 kDa



Immunohistochemistry of paraffin-embedded Human esophagus cancer tissue using XRN1 Polyclonal Antibody at dilution of 1:25 (×200)



Immunohistochemistry of paraffin-embedded Human lung cancer tissue using XRN1 Polyclonal Antibody at dilution of 1:25 (×200)

For Research Use Only

Preparation & Storage

Storage Store at -20°C. Avoid freeze / thaw cycles.

Background

This gene encodes a member of the 5'-3' exonuclease family. The encoded protein may be involved in replication-dependent histone mRNA degradation, and interacts directly with the enhancer of mRNA-decapping protein 4. In addition to mRNA metabolism, a similar protein in yeast has been implicated in a variety of nuclear and cytoplasmic functions, including homologous recombination, meiosis, telomere maintenance, and microtubule assembly. Mutations in this gene are associated with osteosarcoma, suggesting that the encoded protein may also play a role in bone formation. Alternative splicing results in multiple transcript variants.