

CDKL4 Polyclonal Antibody

Catalog No. E-AB-30872

Note: Centrifuge before opening to ensure complete recovery of vial contents.

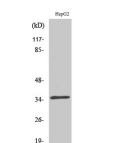
Description

Reactivity	Human
Immunogen	Synthesized peptide derived from the C-terminal region of human CdkL4
Host	Rabbit
Isotype	IgG
Purification	Affinity purification
Conjugation	Unconjugated
Buffer	PBS with 0.02% sodium azide, 0.5% protective protein and 50% glycerol, pH7.4

Applications Recommended Dilution

WB	1:500-1:2000
IHC	1:100-1:300
IF	1:200-1:1000
ELISA	1:40000

Data



www.elabscience.com

Western Blot analysis of HepG2 cells using CdkL4 Polyclonal Antibody at dilution of 1:500.

Observed Mw:36kDa
Calculated Mw:36kDa

Preparation & Storage

Storage Store at -20°C. Avoid freeze / thaw cycles.

Background

Cell cycle progression is controlled in part by a family of cyclin proteins and cyclin dependent kinases (Cdks). Cdk proteins work in concert with the cyclins to phosphorylate key substrates involved in each phase of cell cycle progression. Another family of proteins, Cdk inhibitors, also plays a role in regulating the cell cycle by binding to cyclin-Cdk complexes and modulating their activity. Cdks are considered potential targets for anti-cancer therapy due to their involvement with cell cycle regulation. Cdks are also involved in the regulation of transcription and mRNA processing. CdkL4 (cyclin-dependent kinase-like 4) is a 315 amino acid protein that belongs to the CMGC Ser/Thr protein kinase family and may be involved in cell cycle regulation.

For Research Use Only