

ATE1 Polyclonal Antibody

Catalog No. E-AB-53585

Note: Centrifuge before opening to ensure complete recovery of vial contents.

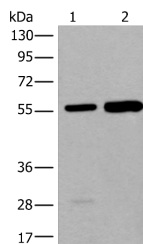
Description

Reactivity	Human, Mouse
Immunogen	Synthetic peptide of human ATE1
Host	Rabbit
Isotype	IgG
Purification	Antigen affinity purification
Conjugation	Unconjugated
Buffer	PBS with 0.05% NaN ₃ and 40% Glycerol, pH7.4

Applications Recommended Dilution

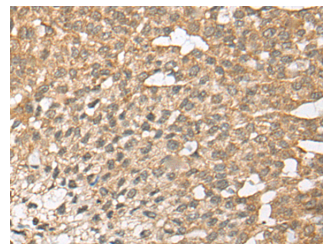
WB 1:500-1:2000,
IHC 1:30-1:150,
ELISA
1:5000-1:10000

Data

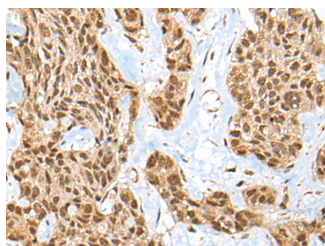


Western blot analysis of A549 and HEPG2 cell lysates using ATE1 Polyclonal Antibody at dilution of 1:400

Observed Mw: Refer to figures
Calculated Mw: 59 kDa



Immunohistochemistry of paraffin-embedded Human liver cancer tissue using ATE1 Polyclonal Antibody at dilution of 1:45 (x200)



Immunohistochemistry of paraffin-embedded Human esophagus cancer tissue using ATE1 Polyclonal Antibody at dilution of 1:45 (x200)

For Research Use Only

Preparation & Storage

Storage Store at -20°C. Avoid freeze / thaw cycles.

Background

This gene encodes an arginyltransferase, an enzyme that is involved in posttranslational conjugation of arginine to N-terminal aspartate or glutamate residues. Conjugation of arginine to the N-terminal aspartate or glutamate targets proteins for ubiquitin-dependent degradation. Alternative splicing results in multiple transcript variants.

For Research Use Only