

CUX1 Polyclonal Antibody

Catalog No. E-AB-30874

Note: Centrifuge before opening to ensure complete recovery of vial contents.

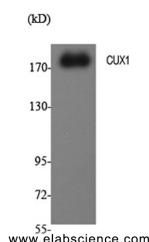
Description

Reactivity	Human,Mouse
Immunogen	Synthesized peptide derived from the N-terminal region of human CUX1
Host	Rabbit
Isotype	IgG
Purification	Affinity purification
Conjugation	Unconjugated
Buffer	PBS with 0.02% sodium azide, 0.5% protective protein and 50% glycerol, pH7.4

Applications Recommended Dilution

WB	1:500-1:2000
IHC	1:100-1:300
IF	1:200-1:1000
ELISA	1:40000

Data



Western Blot analysis of K562 cells using CUX1
Polyclonal Antibody at dilution of 1:1000.

Observed Mw:164kDa
Calculated Mw:164kDa

Preparation & Storage

Storage Store at -20°C. Avoid freeze / thaw cycles.

Background

The protein encoded by this gene is a member of the homeodomain family of DNA binding proteins. It may regulate gene expression, morphogenesis, and differentiation and it may also play a role in the cell cycle progression. Several alternatively spliced transcript variants encoding different isoforms have been identified. CUX1 (Cut Like Homeobox 1) is a Protein Coding gene. Diseases associated with CUX1 include Fiedler's Myocarditis and Dirofilaria immitis. Among its related pathways are Intra-Golgi traffic and FGFR1 mutant receptor activation. GO annotations related to this gene include sequence-specific DNA binding and RNA polymerase II regulatory region sequence-specific DNA binding. An important paralog of this gene is CUX2.

For Research Use Only