

## ARFGEF1 Polyclonal Antibody

**Catalog No.** E-AB-53599

*Note:* Centrifuge before opening to ensure complete recovery of vial contents.

### Description

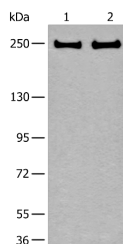
<b>Reactivity</b>	Human, Mouse, Rat
<b>Immunogen</b>	Synthetic peptide of human ARFGEF1
<b>Host</b>	Rabbit
<b>Isotype</b>	IgG
<b>Purification</b>	Antigen affinity purification
<b>Conjugation</b>	Unconjugated
<b>Buffer</b>	PBS with 0.05% NaN <sub>3</sub> and 40% Glycerol, pH7.4

### Applications

### Recommended Dilution

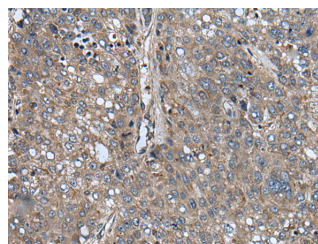
**WB 1:500-1:2000,**  
**IHC 1:30-1:150,**  
**ELISA**  
**1:5000-1:10000**

### Data



Western blot analysis of 293T and Hela cell lysates using ARFGEF1 Polyclonal Antibody at dilution of 1:400

**Observed Mw: Refer to figures**  
**Calculated Mw: 209 kDa**



Immunohistochemistry of paraffin-embedded Human liver cancer tissue using ARFGEF1 Polyclonal Antibody at dilution of 1:40 (x200)

### Preparation & Storage

**Storage** Store at -20°C. Avoid freeze / thaw cycles.

### Background

ADP-ribosylation factors (ARFs) play an important role in intracellular vesicular trafficking. The protein encoded by this gene is involved in the activation of ARFs by accelerating replacement of bound GDP with GTP. It contains a Sec7 domain, which may be responsible for guanine-nucleotide exchange activity and also brefeldin A inhibition.

### For Research Use Only