

BMP1 Polyclonal Antibody

Catalog Number:E-AB-53602

Note: Centrifuge before opening to ensure complete recovery of vial contents.

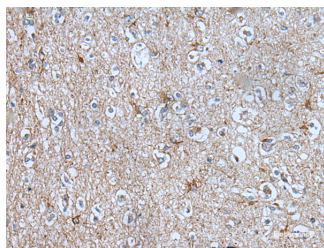
Description

Reactivity	Human, Mouse
Immunogen	Synthetic peptide of human BMP1
Host	Rabbit
Isotype	IgG
Purification	Antigen affinity purification
Conjugation	Unconjugated
Formulation	PBS with 0.05% NaN ₃ and 40% Glycerol,pH7.4

Applications Recommended Dilution

IHC	1:50-1:300
ELISA	1:5000-1:10000

Data



Immunohistochemistry of paraffin-embedded Human brain tissue using BMP1 Polyclonal Antibody at dilution of 1:105(×200)

Preparation & Storage

Storage Store at -20°C. Avoid freeze / thaw cycles.

Background

BMP1 (Bone Morphogenetic Protein 1) is a Protein Coding gene. Diseases associated with BMP1 include Osteogenesis Imperfecta, Type Xiii and Bmp1-Related Osteogenesis Imperfecta. Among its related pathways are GPCR Pathway and PEDF Induced Signaling. GO annotations related to this gene include calcium ion binding and growth factor activity. An important paralog of this gene is TLL2. This gene encodes a protein that is capable of inducing formation of cartilage in vivo. Although other bone morphogenetic proteins are members of the TGF-beta superfamily, this gene encodes a protein that is not closely related to other known growth factors. This gene is expressed as alternatively spliced variants that share an N-terminal protease domain but differ in their C-terminal region.

For Research Use Only

A Reliable Research Partner in Life Science and Medicine

Toll-free: 1-888-852-8623

Web: www.elabscience.com

Tel: 1-832-243-6086

Email: techsupport@elabscience.com

Fax: 1-832-243-6017