

BMP2 Polyclonal Antibody

Catalog No. E-AB-53603

Note: Centrifuge before opening to ensure complete recovery of vial contents.

Description

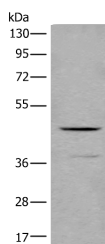
Reactivity	Human
Immunogen	Synthetic peptide of human BMP2
Host	Rabbit
Isotype	IgG
Purification	Antigen affinity purification
Conjugation	Unconjugated
Buffer	PBS with 0.05% NaN ₃ and 40% Glycerol,pH7.4

Applications

Recommended Dilution

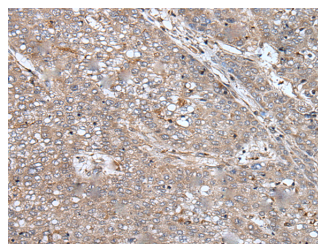
WB 1:500-1:2000,
IHC 1:40-1:200,
ELISA
1:5000-1:10000

Data



Western blot analysis of Human fetal liver tissue lysate using BMP2 Polyclonal Antibody at dilution of 1:600

Observed Mw:Refer to figures
Calculated Mw:45 kDa



Immunohistochemistry of paraffin-embedded Human liver cancer tissue using BMP2 Polyclonal Antibody at dilution of 1:60(×200)

Preparation & Storage

Storage Store at -20°C. Avoid freeze / thaw cycles.

Background

Bone morphogenetic protein-2 (BMP-2) is a member of the transforming growth factor-beta (TGFB) superfamily. BMP2 is synthesized as a 60 kDa precursor that is processed in the secretory pathway to a small 18 kDa monomer; 2 monomers then associate to form the active 30 kDa homodimer, which binds to its receptor. There is also a 40-45 kDa form of BMP2, as an amino-terminal propeptide. BMP2 can induce bone formation and regeneration during early embryonic development. It is involved in the hedgehog pathway, TGF beta signaling pathway, and cytokine-cytokine receptor interaction.

For Research Use Only