

CDYL2 Polyclonal Antibody

Catalog No. E-AB-30877

Note: Centrifuge before opening to ensure complete recovery of vial contents.

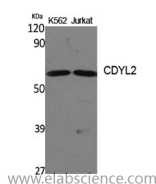
Description

Reactivity	Human
Immunogen	Synthesized peptide derived from the N-terminal region of human CDYL2
Host	Rabbit
Isotype	IgG
Purification	Affinity purification
Buffer	PBS with 0.02% sodium azide, 0.5% protective protein and 50% glycerol pH 7.4.

Applications Recommended Dilution

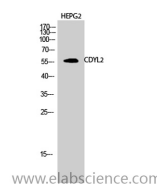
WB	1:500-1:2000
IHC	1:100-1:300
ICC	1:200-1:1000
ELISA	1:20000

Data



Western Blot analysis of K562, Jurkat cells using CDYL2 Polyclonal Antibody at dilution of 1:1000.

Observed Mw:56kDa
Calculated Mw:57kDa



Western Blot analysis of HepG2 cells using CDYL2 Polyclonal Antibody at dilution of 1:1000.

Preparation & Storage

Storage Store at -20°C. Avoid freeze / thaw cycles.

Background

Chromodomain Y-like protein (CDYL) is a related ubiquitous nuclear protein expressed at moderate levels in most tissues. The gene encoding for the CDYL protein localizes to chromosome 6p25.1. CDYL2 contains 1 chromo domain. The exact function of CDYL2 remains unknown.

For Research Use Only