

CNTROB Polyclonal Antibody

Catalog No. E-AB-30878

Note: Centrifuge before opening to ensure complete recovery of vial contents.

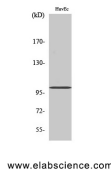
Description

Reactivity	Human
Immunogen	Synthesized peptide derived from the Internal region of human Centrobin
Host	Rabbit
Isotype	IgG
Purification	Affinity purification
Conjugation	Unconjugated
Buffer	PBS with 0.02% sodium azide, 0.5% protective protein and 50% glycerol, pH7.4

Applications Recommended Dilution

WB	1:500-1:2000
IHC	1:100-1:300
ELISA	1:5000

Data



Western Blot analysis of HuvEc cells with CNTROB
Polyclonal Antibody
Observed Mw:100kDa
Calculated Mw:101kDa

Preparation & Storage

Storage Store at -20°C. Avoid freeze / thaw cycles.

Background

This gene encodes a centrosomal protein that interacts with BRCA2, and is required for centriole duplication and cytokinesis. Alternatively spliced transcript variants encoding different isoforms have been described for this gene.

For Research Use Only