

CEP152 Polyclonal Antibody

Catalog No. E-AB-30880

Note: Centrifuge before opening to ensure complete recovery of vial contents.

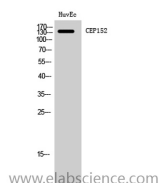
Description

Reactivity	Human, Mouse
Immunogen	Synthesized peptide derived from the Internal region of human CEP152
Host	Rabbit
Isotype	IgG
Purification	Affinity purification
Buffer	PBS with 0.02% sodium azide, 0.5% protective protein and 50% glycerol pH 7.4.

Applications Recommended Dilution

WB	1:500-1:2000
IHC	1:100-1:300
ELISA	1:40000

Data



Western Blot analysis of HuvEc cells with CEP152
Polyclonal Antibody.
Observed Mw:140kDa
Calculated Mw:147kDa

Preparation & Storage

Storage Store at -20°C. Avoid freeze / thaw cycles.

Background

This gene encodes a protein that is thought to be involved with centrosome function. Mutations in this gene have been associated with primary microcephaly (MCPH4). Alternative splicing results in multiple transcript variants. CEP152 (Centrosomal Protein 152) is a Protein Coding gene. Diseases associated with CEP152 include Microcephaly 9, Primary, Autosomal Recessive and Seckel Syndrome 5. Among its related pathways are Regulation of PLK1 Activity at G2/M Transition and Organelle biogenesis and maintenance. GO annotations related to this gene include protein kinase binding.

For Research Use Only