

CBLN2 Polyclonal Antibody

Catalog No. E-AB-30887

Note: Centrifuge before opening to ensure complete recovery of vial contents.

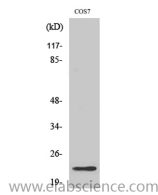
Description

Reactivity	Human,Mouse,Rat,Monkey
Immunogen	Synthesized peptide derived from the C-terminal region of human Cerebellin 2
Host	Rabbit
Isotype	IgG
Purification	Affinity purification
Buffer	PBS with 0.02% sodium azide,0.5% protective protein and 50% glycerol pH 7.4.

Applications Recommended Dilution

WB	1:500-1:2000
ELISA	1:40000

Data



Western Blot analysis of COS7 cells with CBLN2
Polyclonal Antibody
Observed Mw:24kDa
Calculated Mw:24kDa

Preparation & Storage

Storage Store at -20°C. Avoid freeze / thaw cycles.

Background

CBLN2 (Cerebellin 2 Precursor) is a Protein Coding gene. An important paralog of this gene is CBLN1.

For Research Use Only