

CBLN4 Polyclonal Antibody

Catalog No. E-AB-30888

Note: Centrifuge before opening to ensure complete recovery of vial contents.

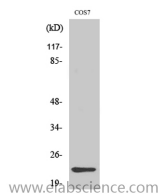
Description

Reactivity	Human, Mouse, Monkey
Immunogen	Synthesized peptide derived from the C-terminal region of human Cerebellin 4
Host	Rabbit
Isotype	IgG
Purification	Affinity purification
Buffer	PBS with 0.02% sodium azide, 0.5% protective protein and 50% glycerol, pH7.4

Applications Recommended Dilution

WB	1:500-1:2000
IHC	1:100-1:300
ELISA	1:40000

Data



Western Blot analysis of COS7 cells with CBLN4
Polyclonal Antibody
Observed Mw:27kDa
Calculated Mw:22kDa

Preparation & Storage

Storage Store at -20°C. Avoid freeze / thaw cycles.

Background

This gene encodes a member of a family of small secreted proteins containing C1Q domains. Members of this family are involved in regulation of neurexin signalling during synapse development. The mouse homolog of the protein encoded by this gene competes with netrin to bind to the deleted in colorectal cancer receptor. CBLN4 (Cerebellin 4 Precursor) is a Protein Coding gene. An important paralog of this gene is CBLN2.

For Research Use Only