

CHEK2 Polyclonal Antibody

Catalog No. E-AB-30916

Note: Centrifuge before opening to ensure complete recovery of vial contents.

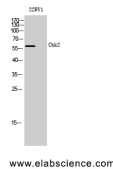
Description

Reactivity	Human,Mouse,Rat
Immunogen	Synthesized peptide derived from human Chk2 around the non-phosphorylation site of Thr387.
Host	Rabbit
Isotype	IgG
Purification	Affinity purification
Conjugation	Unconjugated
Buffer	PBS with 0.02% sodium azide, 0.5% protective protein and 50% glycerol, pH7.4

Applications Recommended Dilution

WB	1:500-1:2000
IHC	1:100-1:300
ELISA	1:40000

Data



Western Blot analysis of 22RV1 cells using CHEK2 Polyclonal Antibody at dilution of 1:2000.

Observed Mw:60kDa
Calculated Mw:61kDa

Preparation & Storage

Storage Store at -20°C. Avoid freeze / thaw cycles.

Background

Regulates cell cycle checkpoints and apoptosis in response to DNA damage, particularly to DNA double-strand breaks. Inhibits CDC25C phosphatase by phosphorylation on 'Ser-216', preventing the entry into mitosis. May also play a role in meiosis. Regulates the TP53 tumor suppressor through phosphorylation at 'Thr-18' and 'Ser-20'.

For Research Use Only